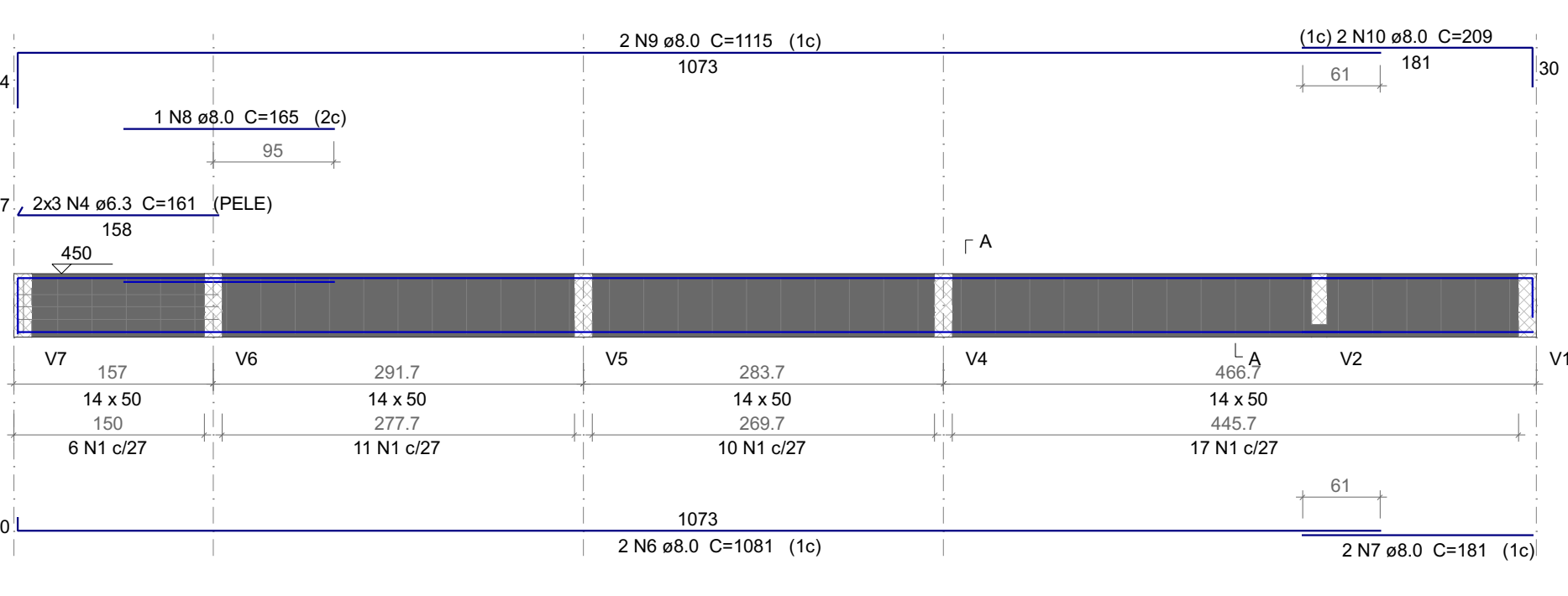
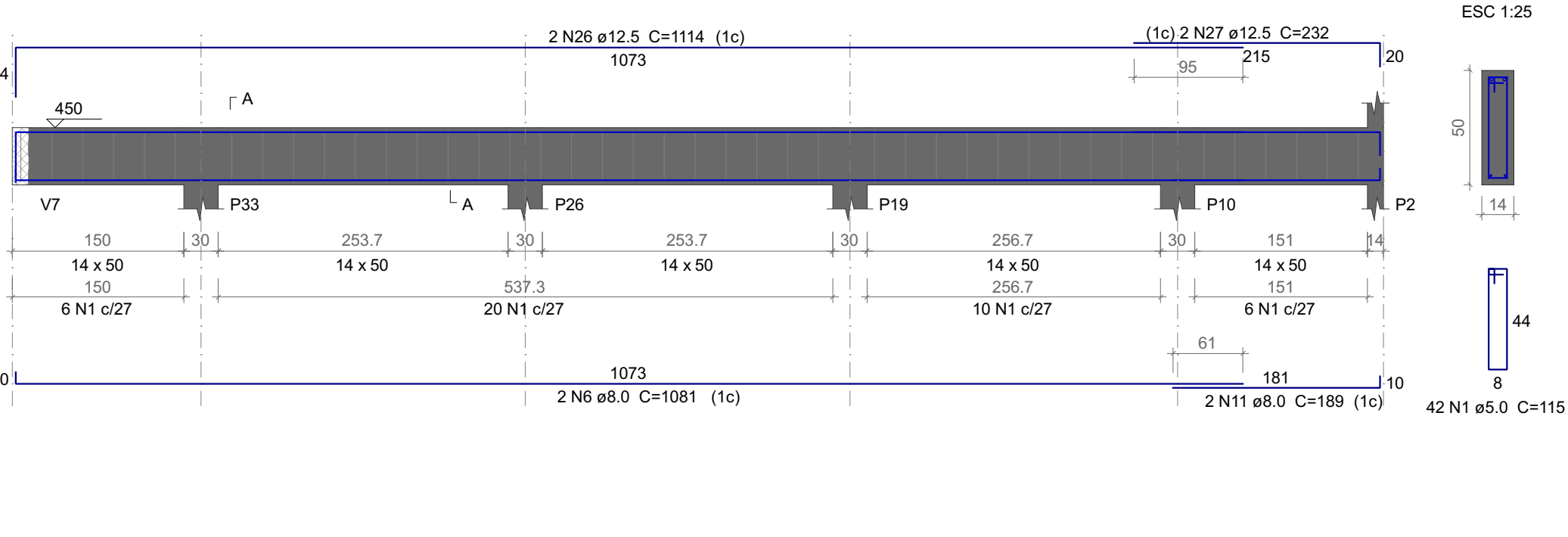


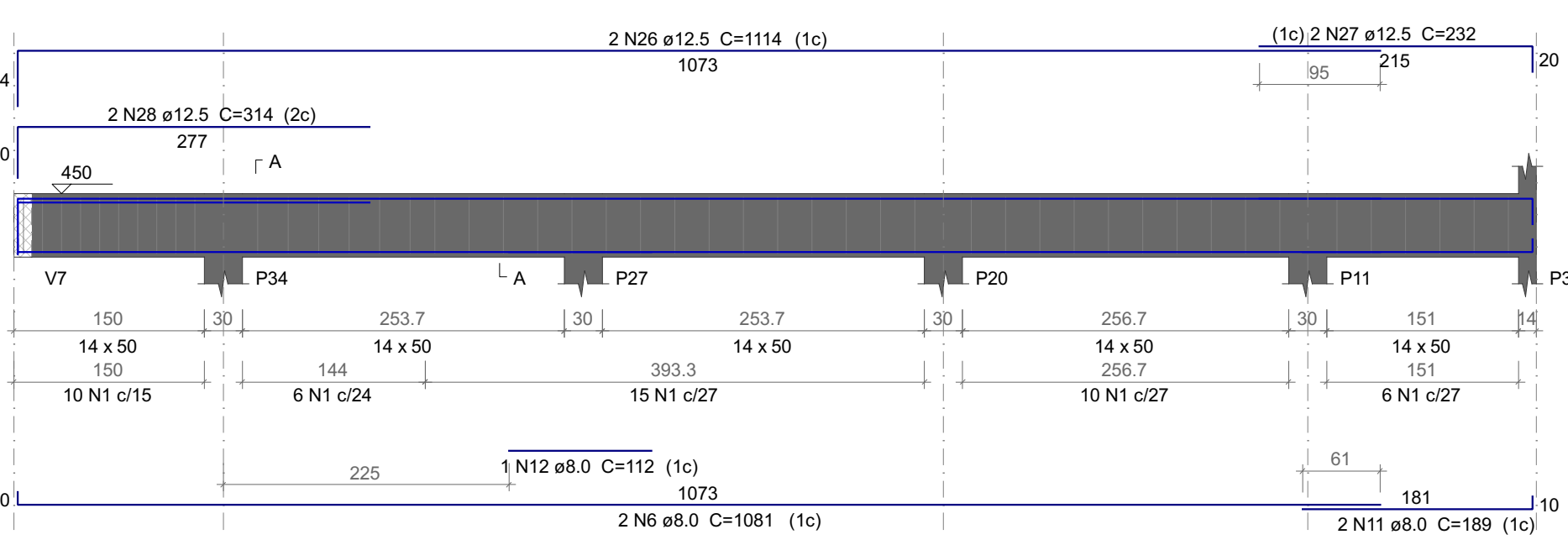
V8



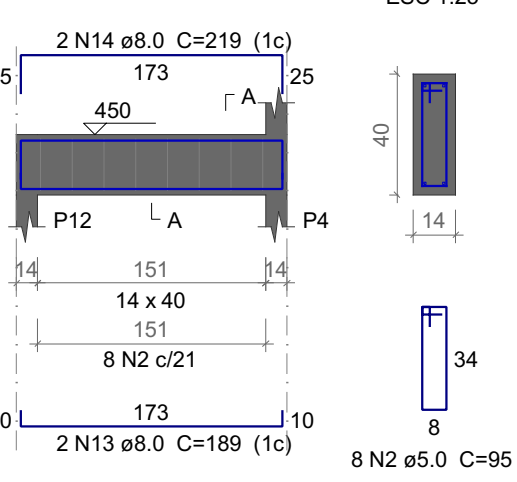
V9



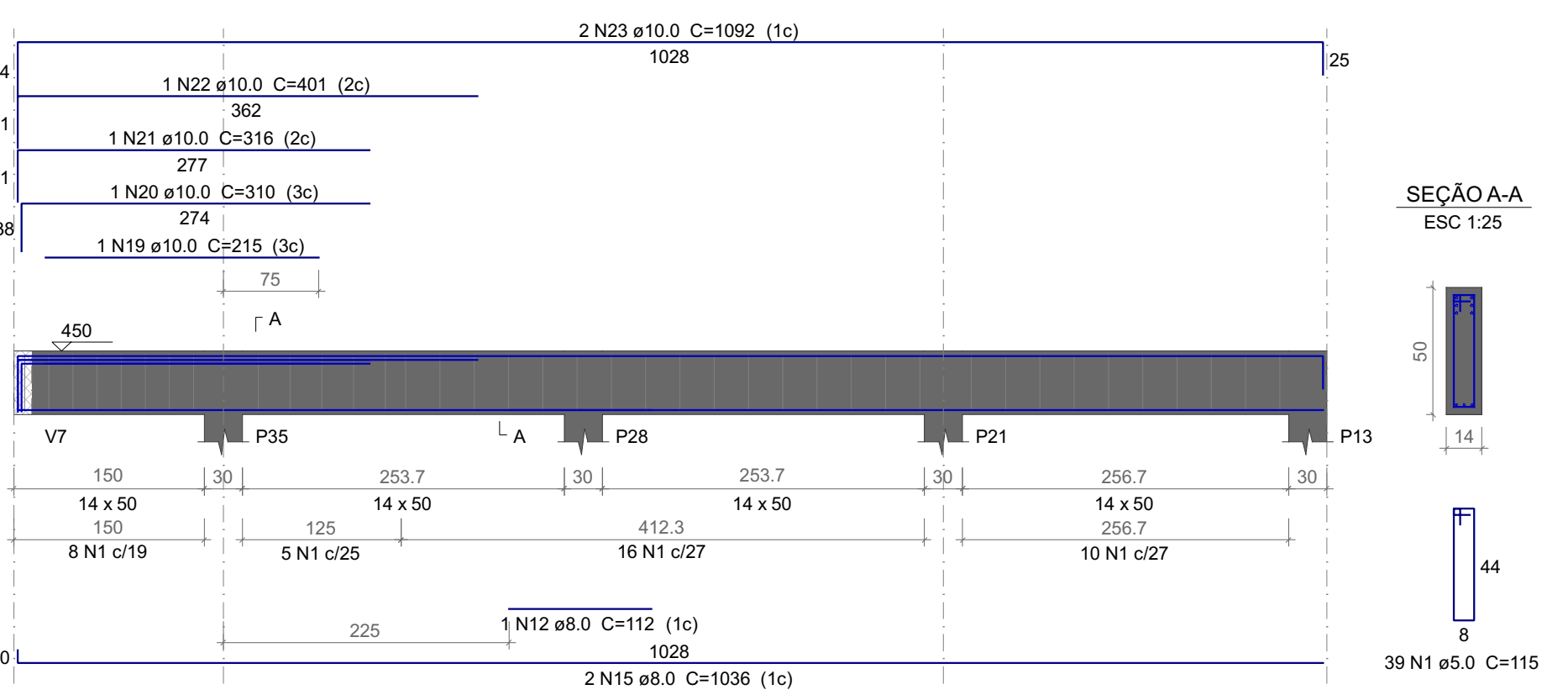
V10



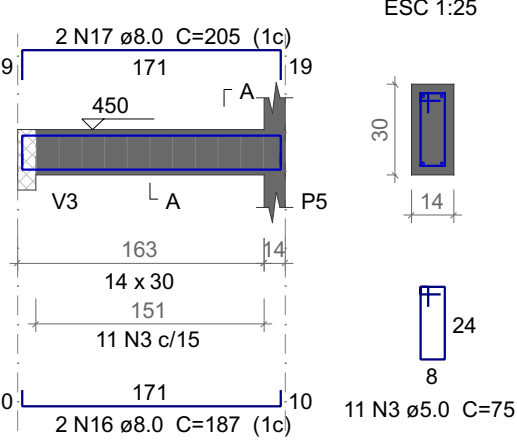
V11



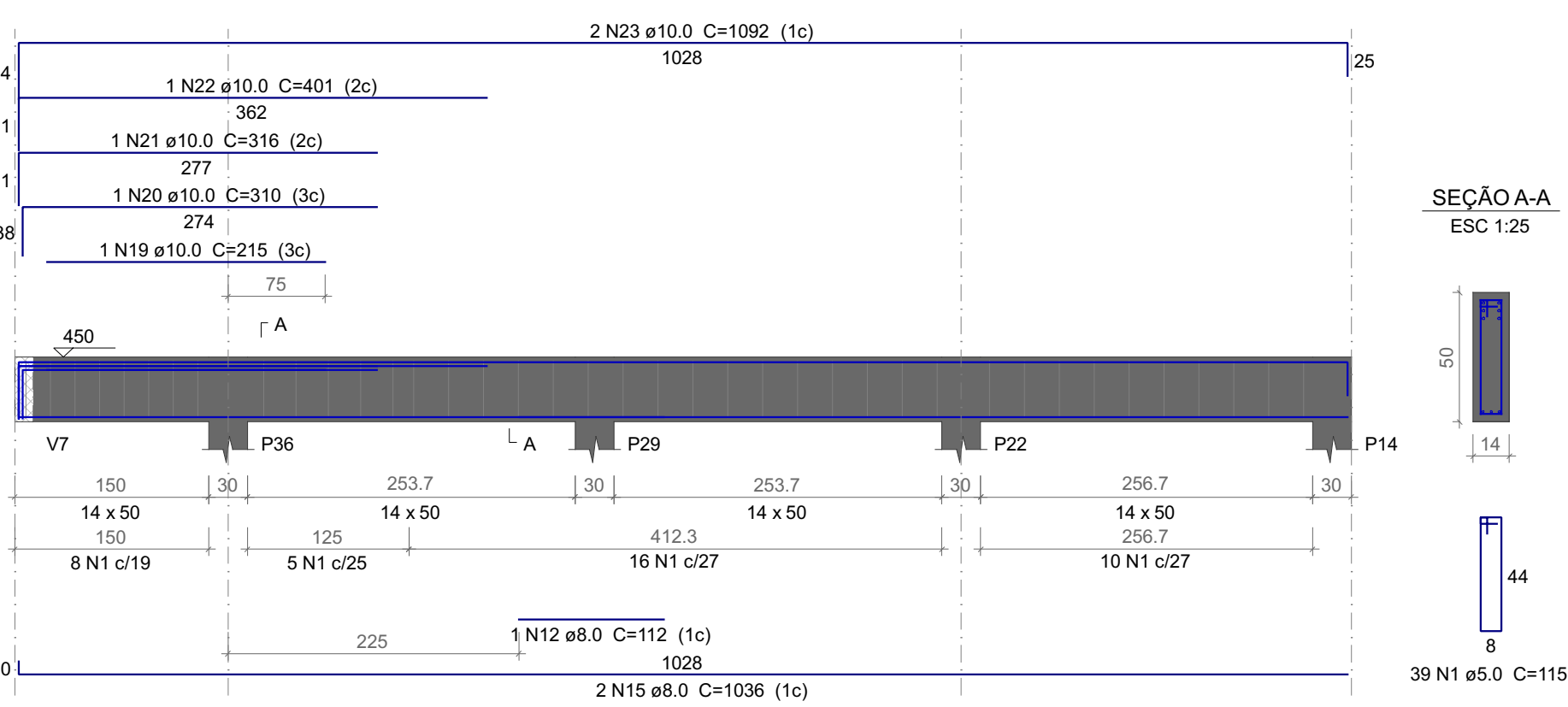
V12



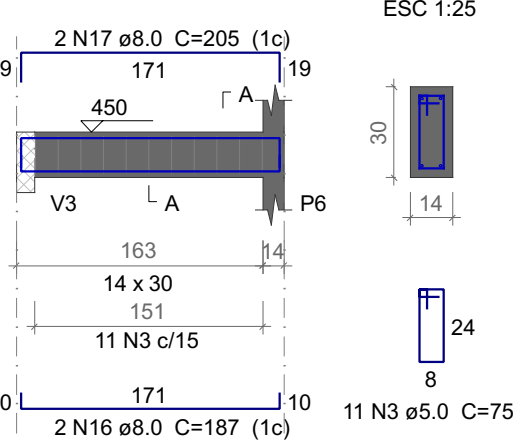
V13



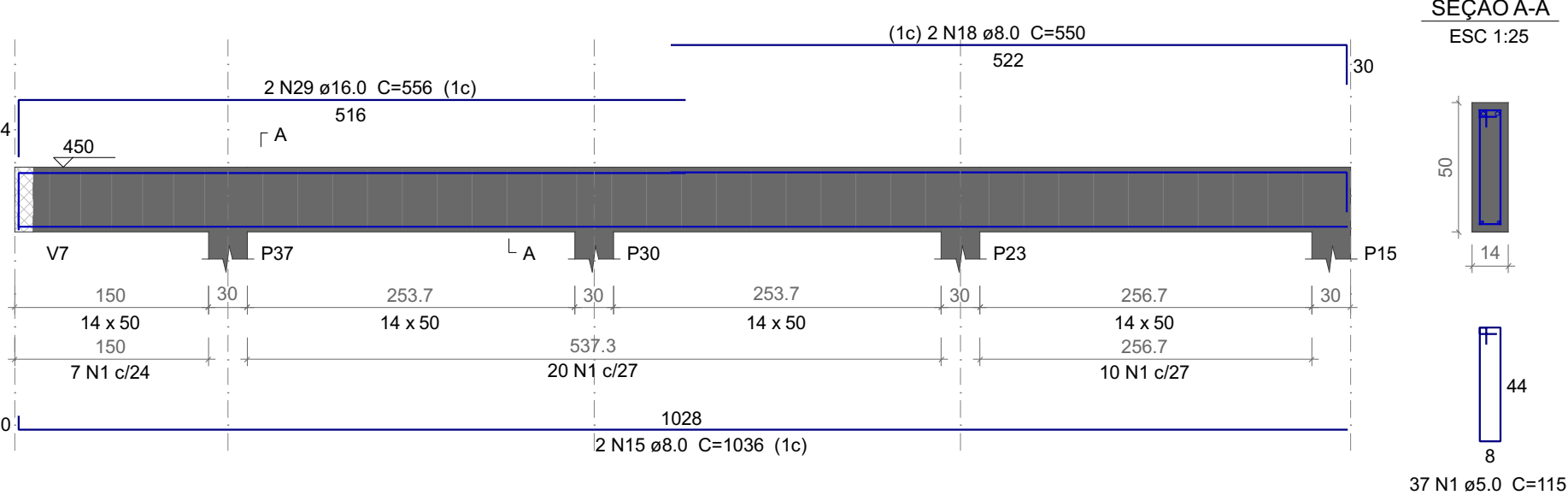
V14



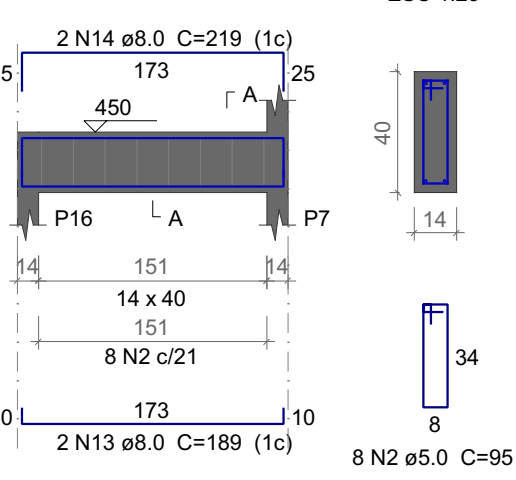
V15



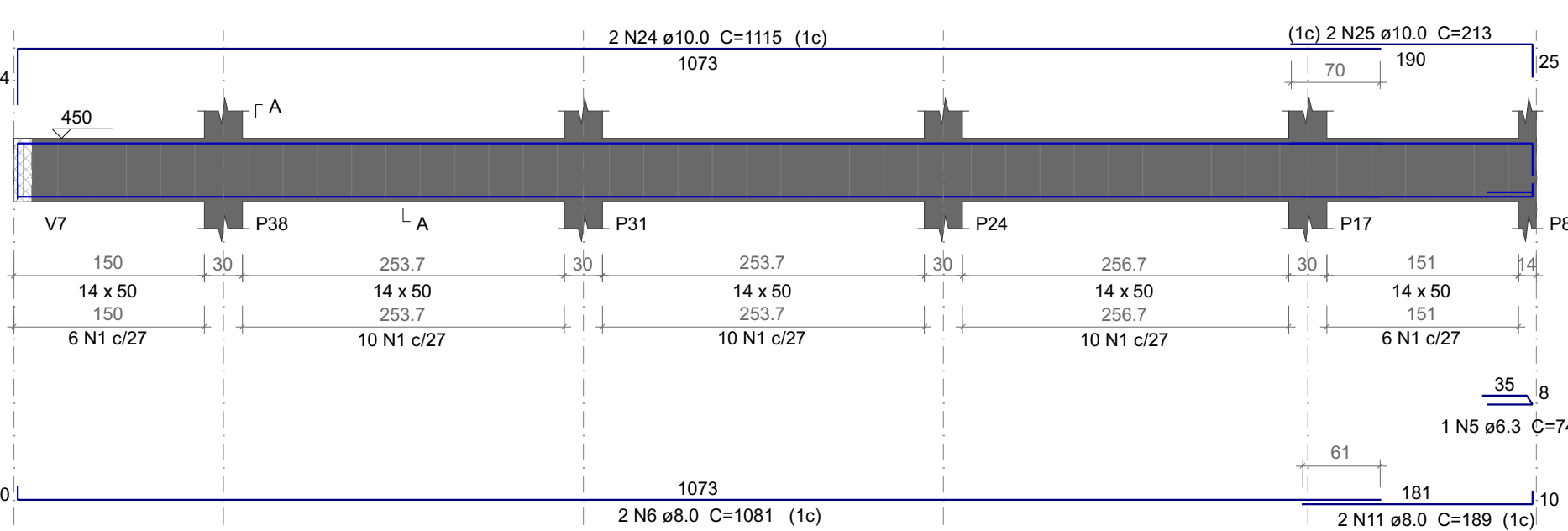
V16



V17



V18



Relação do aço

AÇO	N	DIAM (mm)	QUANT	C.UNIT (cm)	C.TOTAL (cm)
CA60	1	5.0	290	115	33350
	2	5.0	16	95	1520
	3	5.0	22	75	1650
CA50	4	6.3	6	161	966
	5	6.3	1	74	74
	6	8.0	8	1081	8648
	7	8.0	2	181	362
	8	8.0	1	165	165
	9	8.0	2	1115	2230
	10	8.0	2	209	418
	11	8.0	6	189	1134
	12	8.0	3	112	336
	13	8.0	4	199	756
	14	8.0	4	219	876
	15	8.0	6	1036	6216
	16	8.0	4	187	748
	17	8.0	4	205	820
	18	8.0	2	550	1100
	19	10.0	2	215	430
	20	10.0	2	310	620
	21	10.0	2	316	632
	22	10.0	2	401	802
	23	10.0	4	1092	4368
	24	10.0	2	1115	2230
	25	10.0	2	213	426
	26	12.5	4	1114	4456
	27	12.5	4	232	928
	28	12.5	2	314	628
	29	16.0	2	556	1112

Resumo do aço

AÇO	DIAM (mm)	C.TOTAL (m)	QUANT + 10 % (Barras)	PESO + 10 % (kg)
CA50	6.3	10.4		
	8.0	238.1	1	2.8
	10.0	95.1	22	103.3
	12.5	60.2	9	64.5
	16.0	11.2	6	63.7
CA60	5.0	365.2	2	19.3
			-	61.9

PESO TOTAL (kg)

CA50 253.6  
CA60 61.9

Volume de concreto (C-25) = 5.28 m³  
Área de forma = 80.79 m²

Nº	REVISÕES	DATA	APROVAÇÃO
R0	Primeira entrega	05/06/2023	PROSIGMA ENG.
<>	<>	<>	<>

**PROSIGMA ENGENHARIA LTDA**  
CNPJ: 29.969.931/0001-84



Obra  
**Garagem e Salas**

Projeto  
GUILHERME HENRIQUE FERREIRA  
CREA: 506.390.216-2

Proprietário  
P. M. de Platina

Projeto	<b>ESTRUTURAL</b>		Prancha
Pavimento	Térreo - Respaldo		
Conteúdo	DETALHES E FORMAS		
ART			
Data	05/06/2023	Escala	Indicada
Desenho	GUILHERME F.	Conferência	Guilherme F.
Conjunto	1	Pran. Tot.	23

15